

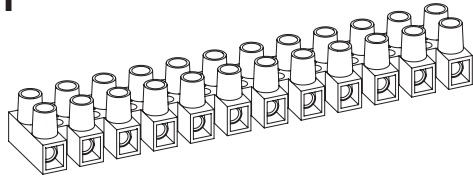
Terminal Blocks

Kopplingsplint  
Standard

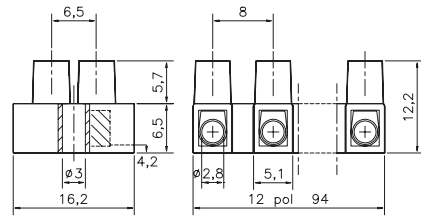
Anschlußklemmen  
Morsettiere a Vite

EN 60998-2-1 CE

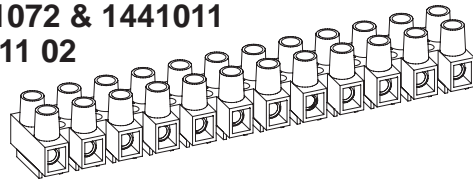
HE1



| Description      | Poles | Insert | Article No. |
|------------------|-------|--------|-------------|
| HE1 12-poles     | 12    | Std.   | 0011N1210   |
| HE1 WPR 12-poles | 12    | WPR    | 0011W1210   |
| HE1 BA 12-poles  | 12    | BA     | 0011B1210   |
| HE1 2-poles      | 2     | Std.   | 0011N0210   |

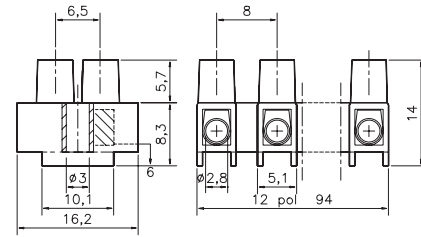
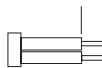


HE1N  
1441072 & 1441011  
14 411 02

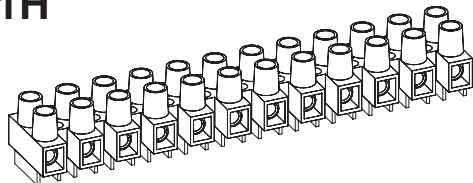


| Description       | Poles | Insert | Article No. |
|-------------------|-------|--------|-------------|
| HE1N 12-poles     | 12    | Std.   | 0012N1210   |
| HE1N WPR 12-poles | 12    | WPR    | 0012W1210   |
| HE1N BA 12-poles  | 12    | BA     | 0012B1210   |
| HE1N 3-poles      | 3     | Std.   | 0012N0310   |
| HE1N MS 12-poles  | 12    | Std.   | 0012N1210MS |

Stripping Length  
Skalning  
Abisolierlänge  
4,5 - 5 mm

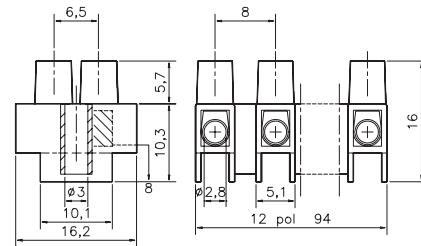


HE1H



| Description       | Poles | Insert | Article No. |
|-------------------|-------|--------|-------------|
| HE1H 12-poles     | 12    | Std.   | 0013N1210   |
| HE1H WPR 12-poles | 12    | WPR    | 0013W1210   |
| HE1H BA 12-poles  | 12    | BA     | 0013B1210   |
| HE1H WPR 4-poles  | 4     | WPR    | 0013W0410   |

Torque:  
Recommended 0,35 Nm  
Max. 0,4 Nm



TECHNICAL DATA

TEKNISKA DATA

TECHNISCHE ANGABEN

|              |                |                               |
|--------------|----------------|-------------------------------|
| Voltage      | Fixing centres | Cable size                    |
| Märkspänning | Delningsmätt   | Area                          |
| Nennspannung | Rastermass     | Nennquerschnitt               |
| <b>400 V</b> | <b>8 mm</b>    | <b>1 - 2,5 mm<sup>2</sup></b> |

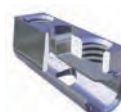
|                         |                       |                     |
|-------------------------|-----------------------|---------------------|
| UL HE1 300V / HE1H 600V |                       |                     |
| Current                 | Working temperature   | Insulation material |
| Märkström               | Arbetstemperatur      | Isolationsmaterial  |
| Nennstrom               | Dauertemperatur       | Isoliermaterial     |
| <b>6 A / UL 20 A</b>    | <b>80° C / 100° C</b> | <b>PA 66/6 V0</b>   |

Standard  
Insert  
Inlägg  
Klemmkörper

Type BA  
Insert Barrier  
Inlägg Barriär  
Klemmkörper Barriere

Type WPR  
Insert Wire protector  
Inlägg Trådsydd  
Klemmkörper Drahtschutz

HFM  
Hot Foil Marking  
Märkning  
Bezeichnung



The terminal block can be supplied with wire protector **WPR** or with barrier inserts **BA**, hot foil marking **HFM** or Brass Screws **MS**.  
Dessa plintar kan levereras med trådsydd **WPR** eller med barriär inlägg **BA**, samt Mässingskrav **MS** och märkning **HFM** direkt på plinten.  
Die Klemmen können auf Wunsch mit Drahtschutz **WPR**, Klemmkörper mit Barriere **BA**, oder mit Messingschrauben **MS** und Bezeichnung **HFM** geliefert werden.

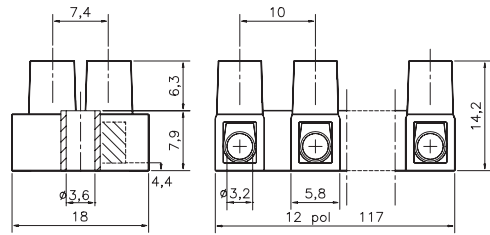
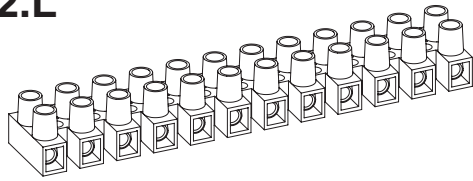
Terminal Blocks

Kopplingsplint  
Standard

Anschlußklemmen  
Morsettiere a Vite

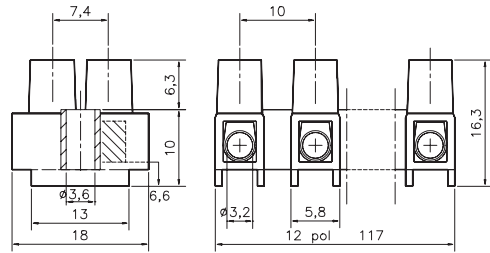
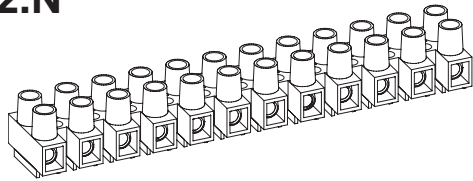
EN 60998-2-1 CE

HE2.L



| Description         | Poles | Insert | Article No. |
|---------------------|-------|--------|-------------|
| HE2.L 12-poles      | 12    | Std.   | 0021N1210   |
| HE2.L WPR 12-poles  | 12    | WPR    | 0021W1210   |
| HE2.L BA 12-poles   | 12    | BA     | 0021B1210   |
| HE2.L 2-poles       | 2     | Std.   | 0021N0210   |
| HE2.L WPR MS 12-pol | 12    | WPR    | 0021W1210MS |

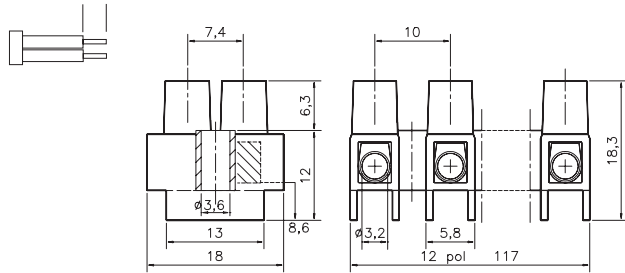
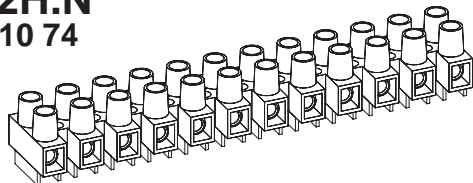
HE2.N



| Description        | Poles | Insert | Article No. |
|--------------------|-------|--------|-------------|
| HE2.N 12-poles     | 12    | Std.   | 0022N1210   |
| HE2.N WPR 12-poles | 12    | WPR    | 0022W1210   |
| HE2.N BA 12-poles  | 12    | BA     | 0022B1210   |
| HE2.N 3-poles      | 3     | Std.   | 0022N0310   |

Stripping Length  
Skalning  
Abisolierlänge  
5 - 6 mm

HE2H.N  
14 410 74



| Description         | Poles | Insert | Article No. |
|---------------------|-------|--------|-------------|
| HE2H.N 12-poles     | 12    | Std.   | 0023N1210   |
| HE2H.N WPR 12-poles | 12    | WPR    | 0023W1210   |
| HE2H.N BA 12-poles  | 12    | BA     | 0023B1210   |
| HE2H.N WPR 4-poles  | 4     | WPR    | 0023W0410   |

Torque:  
Recommended 0,4 Nm  
Max. 0,5 Nm

TECHNICAL DATA

TEKNISKA DATA

TECHNISCHE ANGABEN

Approvals

Godkännanden Godkännanden

|              |                       |                               |
|--------------|-----------------------|-------------------------------|
| Voltage      | Fixing centres        | Cable size                    |
| Märkspänning | Delningsmätt          | Area                          |
| Nennspannung | Rastermass            | Nennquerschnitt               |
| <b>400 V</b> | <b>10 mm</b>          | <b>1,5 - 4 mm<sup>2</sup></b> |
| Current      | Working temperature   | Insulation material           |
| Märkström    | Arbetstemperatur      | Isolationsmaterial            |
| Nennstrom    | Dauertemperatur       | Isoliermaterial               |
| <b>10 A</b>  | <b>80° C / 100° C</b> | <b>PA 66/6 V0</b>             |

|                         |                             |
|-------------------------|-----------------------------|
| Insert                  | Screw M3                    |
| <b>Tinned Brass</b>     | <b>Steel bluechromated</b>  |
| Hylsa                   | Skruv M3                    |
| <b>Mässing förtent</b>  | <b>Stål blåkromatiserad</b> |
| Klemmkörper             | Schraube M3                 |
| <b>Messing verzinkt</b> | <b>Stahl blauchromatier</b> |

| HE2.L | HE2.N | HE2H.N |
|-------|-------|--------|
| FI    | FI    | FI     |
| DEMKO | DEMKO | DEMKO  |
| SEMKO | SEMKO | SEMKO  |
| NEMKO | NEMKO | NEMKO  |

Standard  
Insert  
Inlägg  
Klemmkörper

Type BA  
Insert Barrier  
Inlägg Barriär  
Klemmkörper Barriere

Type WPR  
Insert Wire protector  
Inlägg Trådskydd  
Klemmkörper Drahtschutz

HFM  
Hot Foil Marking  
Märkning  
Bezeichnung



The terminal block can be supplied with wire protector **WPR** or with barrier inserts **BA**, hot foil marking **HFM** or Brass Screws **MS**. Dessa plintar kan levereras med trådskydd **WPR** eller med barriär inlägg **BA**, samt Mässingskrav **MS** och märkning **HFM** direkt på plinten. Die Klemmen können auf Wunsch mit Drahtschutz **WPR**, Klemmkörper mit Barriere **BA**, oder mit Messingschrauben **MS** und Bezeichnung **HFM** geliefert werden.

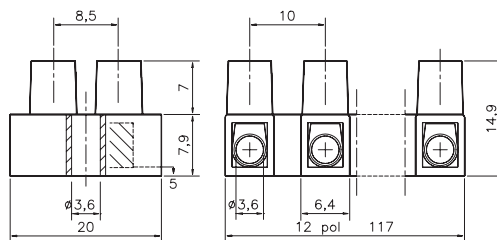
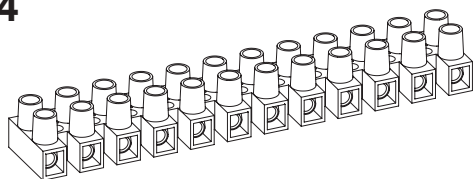
Terminal Blocks

Kopplingsplint  
Standard

Anschlußklemmen  
Morsettiere a Vite

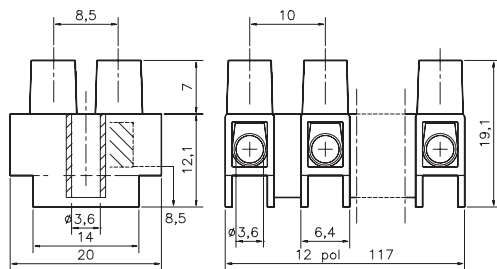
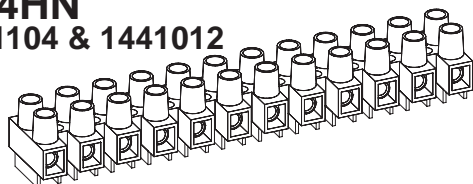
EN 60998-2-1 CE

HE4



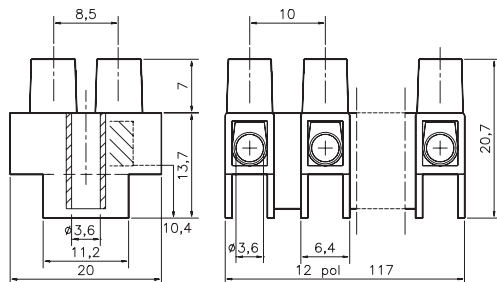
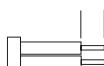
| Description      | Poles | Insert | Article No. |
|------------------|-------|--------|-------------|
| HE4 12-poles     | 12    | Std.   | 0041N1210   |
| HE4 WPR 12-poles | 12    | WPR    | 0041W1210   |
| HE4 BA 12-poles  | 12    | BA     | 0041B1210   |
| HE4 2-poles      | 2     | Std.   | 0041N0210   |
| HE4 WPB 12-poles | 12    | WPB    | 0041R1210   |

HE4HN  
1441104 & 1441012

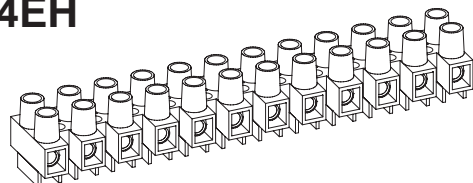


| Description        | Poles | Insert | Article No. |
|--------------------|-------|--------|-------------|
| HE4HN 12-poles     | 12    | Std.   | 0043N1210   |
| HE4HN WPR 12-poles | 12    | WPR    | 0043W1210   |
| HE4HN BA 12-poles  | 12    | BA     | 0043B1210   |
| HE4HN 3-poles      | 3     | Std.   | 0043N0310   |
| HE4HN MS 12-poles  | 12    | Std.   | 0043N1210MS |
| HE4HN WPB 12-poles | 12    | WPB    | 0043R1210   |

Stripping Length  
Skalning  
Abisolierlänge  
5,8 - 6,3 mm



HE4EH



Torque:  
Recommended 0,4 Nm  
Max. 0,5 Nm

| Description        | Poles | Insert | Article No. |
|--------------------|-------|--------|-------------|
| HE4EH 12-poles     | 12    | Std.   | 0044N1210   |
| HE4HH WPR 12-poles | 12    | WPR    | 0044W1210   |
| HE4EH BA 12-poles  | 12    | BA     | 0044B1210   |
| HE4EH WPR 4-poles  | 4     | WPR    | 0044W0410   |
| HE4EH WPB 12-poles | 12    | WPB    | 0044R1210   |

TECHNICAL DATA

TEKNISKA DATA

TECHNISCHE ANGABEN

|                                    |                       |                               |
|------------------------------------|-----------------------|-------------------------------|
| Voltage                            | Fixing centres        | Cable size                    |
| Märkspänning                       | Delningsmått          | Area                          |
| Nennspannung                       | Rastermass            | Nennquerschnitt               |
| <b>400 - 500 V</b>                 | <b>10 mm</b>          | <b>2,5 - 4 mm<sup>2</sup></b> |
| <b>UL HE4 300V / HE4HN+EH 600V</b> |                       |                               |
| Current                            | Working temperature   | Insulation material           |
| Märkström                          | Arbetstemperatur      | Isolationsmaterial            |
| Nennstrom                          | Dauertemperatur       | Isoliermaterial               |
| <b>10 A / UL 30A</b>               | <b>80° C / 100° C</b> | <b>PA 66/6 V0</b>             |

|                         |                               |
|-------------------------|-------------------------------|
| Insert                  | Screw M3                      |
| <b>Tinned Brass</b>     | <b>Steel bluechromated</b>    |
| Hylsa                   | Skruv M3                      |
| <b>Mässing förtent</b>  | <b>Stål blåkromatiserad</b>   |
| Klemmkörper             | Schraube M3                   |
| <b>Messing verzinkt</b> | <b>Stahl blauchromatieret</b> |
| <b>AWG</b>              |                               |
| 24-10                   |                               |

| Approvals   | Godkännanden  | Genehmigungen |
|---|---|---------------|
| <b>HE4</b>  | <b>HE4HN</b>  | <b>HE4EH</b>  |
| SEMKO   | SEMKO   | SEMKO         |
| FI  | FI  | FI            |
| DEMKO   | DEMKO   | DEMKO         |
| NEMKO   | NEMKO   | NEMKO         |
| UL  US | UL  US |               |
| Canada  | Canada  |               |

Standard  
Insert  
Inlägg  
Klemmkörper

Type BA  
Insert Barrier  
Inlägg Barriär  
Klemmkörper Barriere

Type WPR  
Insert Wire protector  
Inlägg Trådskydd  
Klemmkörper Drahtschutz

Type WPB  
Insert Barrier Wire Protector  
Inlägg Trådskydd Barriär  
Klemmkörper Drahtschutz Barriere

HFM  
Hot Foil Marking  
Märkning  
Bezeichnung



The terminal block can be supplied with wire protector **WPR**, barrier inserts **BA** or with Barrier Wire Protector **WPB**, hot foil marking **HFM** or Brass Screws **MS**. Dessa plintar kan levereras med trådskydd **WPR**, barriär inlägg **BA** eller med Barriär Trådskydd **WPB**, samt Mässingskrav **MS** och märkning **HFM** direkt på plinten. Die Klemmen können auf Wunsch mit Drahtschutz **WPR**, Barriere **BA** oder Klemmkörper mit Barriere Drahtschutz **WPB** mit Messingschrauben **MS** und Bezeichnung **HFM** geliefert werden.

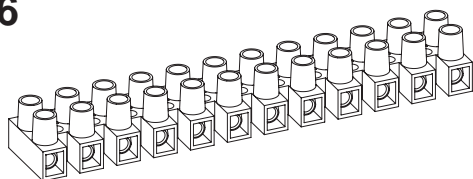
**Terminal Blocks  
Klemrækker**

**Kopplingsplint  
Standard**

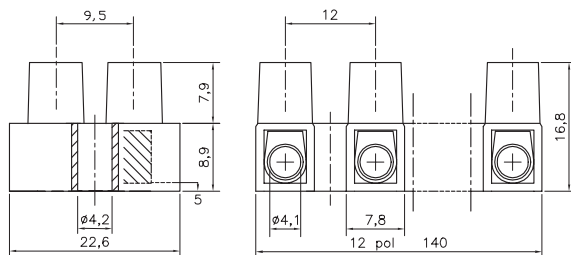
**Anschlußklemmen  
Morsettiere a Vite**

**EN 60998-2-1 CE**

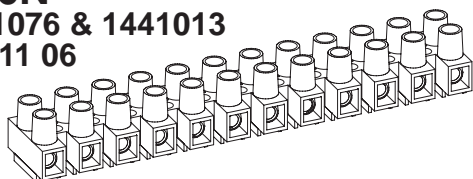
**HE6**



| Description      | Poles | Insert | Article No. |
|------------------|-------|--------|-------------|
| HE6 12-poles     | 12    | Std.   | 0061N1210   |
| HE6 WPR 12-poles | 12    | WPR    | 0061W1210   |
| HE6 WPB 12-poles | 12    | WPB    | 0061R1210   |
| HE6 2-poles      | 2     | Std.   | 0061N0210   |

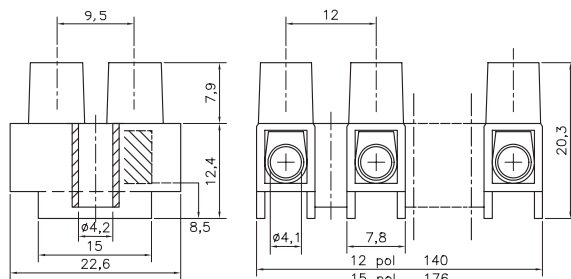


**HE6N  
1441076 & 1441013  
14 411 06**

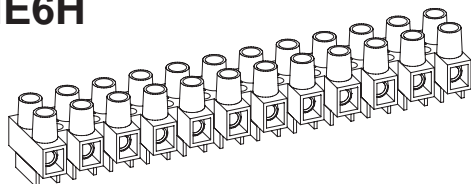


| Description       | Poles | Insert | Article No. |
|-------------------|-------|--------|-------------|
| HE6N 12-poles     | 12    | Std.   | 0063N1210   |
| HE6N WPR 12-poles | 12    | WPR    | 0063W1210   |
| HE6N BA 12-poles  | 12    | BA     | 0063B1210   |
| HE6N 3-poles      | 3     | Std.   | 0063N0310   |
| HE6N MS 12-poles  | 12    | Std.   | 0063N1210MS |

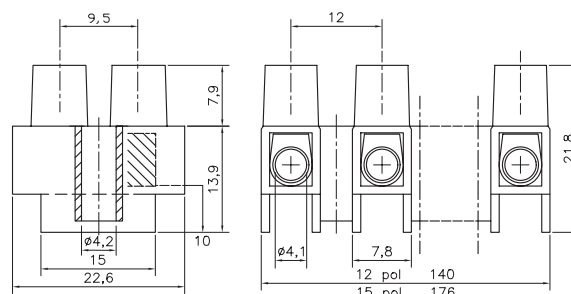
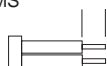
Stripping Length  
Skalning  
Abisolierlänge  
7 - 7,5 mm



**HE6H**



| Description       | Poles | Insert | Article No. |
|-------------------|-------|--------|-------------|
| HE6H 12-poles     | 12    | Std.   | 0064N1210   |
| HE6H WPR 12-poles | 12    | WPR    | 0064W1210   |
| HE6H BA 12-poles  | 12    | BA     | 0064B1210   |
| HE6H WPB 4-poles  | 4     | WPB    | 0064R0410   |



**Torque:**  
Recommended 0,55 Nm  
Max. 0,8 Nm

**TECHNICAL DATA    TEKNISKA DATA    TECHNISCHE ANGABEN**

|                    |                |                             |
|--------------------|----------------|-----------------------------|
| Voltage            | Fixing centres | Cable size                  |
| Märkspänning       | Delningsmått   | Area                        |
| Nennspannung       | Rastermass     | Nennquerschnitt             |
| <b>400 - 500 V</b> | <b>12 mm</b>   | <b>4 - 6 mm<sup>2</sup></b> |

|                                |                       |
|--------------------------------|-----------------------|
| <b>UL HE6 300V / HE6H 600V</b> |                       |
| Current                        | Working temperature   |
| Märkström                      | Arbetstemperatur      |
| Nennstrom                      | Dauertemperatur       |
| <b>16 A/UL 30/40A</b>          | <b>80° C / 100° C</b> |

|                        |                             |
|------------------------|-----------------------------|
| Insert                 | Screw M3,5                  |
| <b>Tinned Brass</b>    | <b>Steel bluechromated</b>  |
| Hylsa                  | Skruv M3,5                  |
| <b>Mässing förtent</b> | <b>Stål blåkromatiserad</b> |
| Klemmkörper            | Schraube M3,5               |
| <b>Messing verzint</b> | <b>Stahl blauchromatier</b> |
| <b>AWG</b>             |                             |
| <b>PA 66/6 V0</b>      | <b>20-8/20-10</b>           |

| Approvals  | Godkännanden | Genehmigungen |
|------------|--------------|---------------|
| <b>HE6</b> | <b>HE6N</b>  | <b>HE6H</b>   |
| SEMKO      | SEMKO        | SEMKO         |
| FI         | FI           | FI            |
| CE         | CE           | CE            |
| NEMKO      | NEMKO        | NEMKO         |
| DEMKO      | DEMKO        | DEMKO         |
| UL         | Canada       | UL  Canada    |

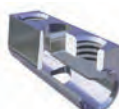
**Standard**  
Insert  
Inlägg  
Klemmkörper

**Type BA**  
Insert Barrier  
Inlägg Barriär  
Klemmkörper Barriere

**Type WPR**  
Insert Wire protector  
Inlägg Trådskydd  
Klemmkörper Drahtschutz

**Type WPB**  
Insert Barrier Wire Protector  
Inlägg Trådskydd Barriär  
Klemmkörper Drahtschutz Barriere

**HFM**  
Hot Foil Marking  
Märkning  
Bezeichnung



The terminal block can be supplied with wire protector **WPR**, barrier inserts **BA** or with Barrier Wire Protector **WPB**, hot foil marking **HFM** or Brass Screws **MS**. Dessa plintar kan levereras med trådskydd **WPR**, barriär inlägg **BA** eller med Barriär Trådskydd **WPB**, samt Mässingskrav **MS** och märkning **HFM** direkt på plinten. Die Klemmen können auf Wunsch mit Drahtschutz **WPR**, Barriere **BA** oder Klemmkörper mit Barriere Drahtschutz **WPB** mit Messingschrauben **MS** und Bezeichnung **HFM** geliefert werden.

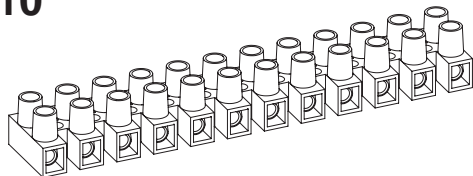
## Terminal Blocks

 Kopplingsplint  
Standard

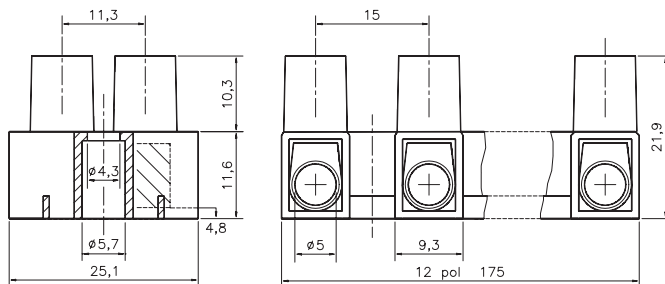
 Anschlußklemmen  
Morsettiere a Vite

## EN 60998-2-1 CE

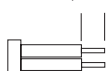
## HE10



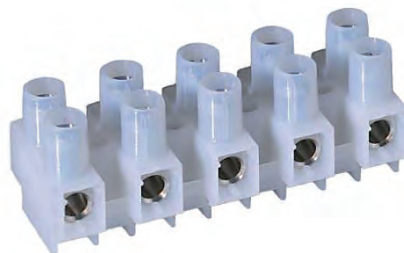
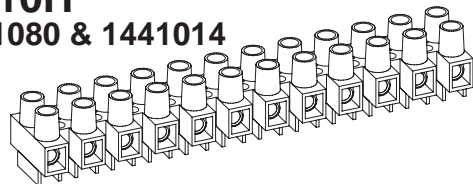
| Description       | Poles | Insert | Article No. |
|-------------------|-------|--------|-------------|
| HE10 12-poles     | 12    | Std.   | 0101N1210   |
| HE10 WPR 12-poles | 12    | WPR    | 0101W1210   |
| HE10 BA 12-poles  | 12    | BA     | 0101B1210   |
| HE10 2-poles      | 2     | Std.   | 0101N0210   |



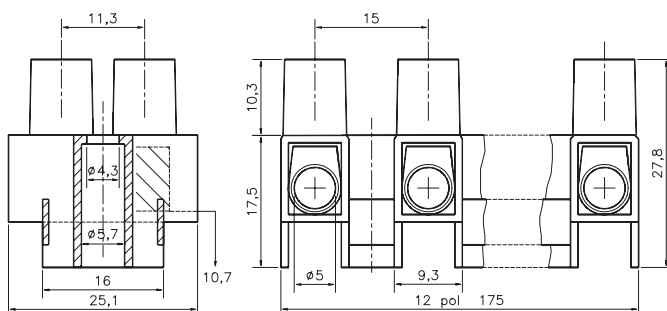
Stripping Length  
Skalning  
Abisolierlänge  
7,6 - 9 mm



**Torque:**  
Recommended 0,84 Nm  
Max. 1,2 Nm


 HE10H  
1441080 & 1441014


| Description        | Poles | Insert | Article No. |
|--------------------|-------|--------|-------------|
| HE10H 12-poles     | 12    | Std.   | 0103N1210   |
| HE10H WPR 12-poles | 12    | WPR    | 0103W1210   |
| HE10H BA 12-poles  | 12    | BA     | 0103B1210   |
| HE10H WPR 4-poles  | 4     | WPR    | 0103W0410   |
| HE10H MS 12-poles  | 12    | Std.   | 0103N1210MS |



## TECHNICAL DATA

## TEKNISKA DATA

## TECHNISCHE ANGABEN

## Approvals

## Godkännanden

## Genehmigungen

|                    |                |                              |
|--------------------|----------------|------------------------------|
| Voltage            | Fixing centres | Cable size                   |
| Märkspänning       | Delningsmätt   | Area                         |
| Nennspannung       | Rastermass     | Nennquerschnitt              |
| <b>400 - 500 V</b> | <b>15 mm</b>   | <b>6 - 10 mm<sup>2</sup></b> |

|                       |                       |                     |
|-----------------------|-----------------------|---------------------|
| Current               | Working temperature   | Insulation material |
| Märkström             | Arbetstemperatur      | Isolationsmaterial  |
| Nennstrom             | Dauertemperatur       | Isoliermaterial     |
| <b>25 A / UL 50 A</b> | <b>80° C / 100° C</b> | <b>PA 66/6 V0</b>   |

|                     |                            |
|---------------------|----------------------------|
| Insert              | Screw M4                   |
| <b>Tinned Brass</b> | <b>Steel bluechromated</b> |
| Hylsa               | Skruv M4                   |

|             |              |
|-------------|--------------|
| <b>HE10</b> | <b>HE10H</b> |
| NEMKO       | NEMKO        |
| FI          | FI           |

|                         |                              |
|-------------------------|------------------------------|
| <b>Mässing förtent</b>  | <b>Stål blåkromatiserad</b>  |
| Klemmkörper             | Schraube M4                  |
| <b>Messing verzinkt</b> | <b>Stahl blauchromatiert</b> |

|       |       |
|-------|-------|
| SEMKO | SEMKO |
| DEMKO | DEMKO |

18-6/18-8

|        |        |
|--------|--------|
| UL     | UL     |
| Canada | Canada |

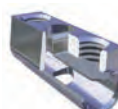


**Standard**  
Insert  
Inlägg  
Klemmkörper

**Type BA**  
Insert Barrier  
Inlägg Barriär  
Klemmkörper Barriere

**Type WPR**  
Insert Wire protector  
Inlägg Trådskydd  
Klemmkörper Drahtschutz

**HFM**  
Hot Foil Marking  
Märkning  
Bezeichnung



The terminal block can be supplied with wire protector **WPR** or with barrier inserts **BA**, hot foil marking **HFM** or Brass Screws **MS**. Dessa plintar kan levereras med trådskydd **WPR** eller med barriär inlägg **BA**, samt Mässingskrav **MS** och märkning **HFM** direkt på plinten. Die Klemmen können auf Wunsch mit Drahtschutz **WPR**, Klemmkörper mit Barriere **BA**, oder mit Messingschrauben **MS** und Bezeichnung **HFM** geliefert werden.



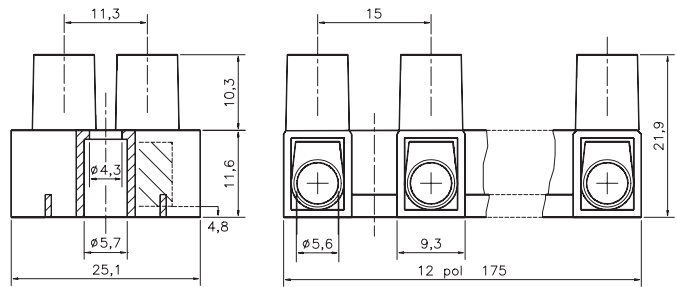
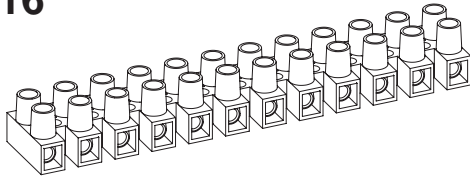
Terminal Blocks

Kopplingsplint  
Standard

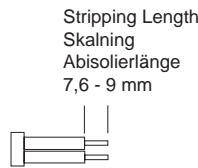
Anschlußklemmen  
Morsettiere a Vite

EN 60998-2-1 CE

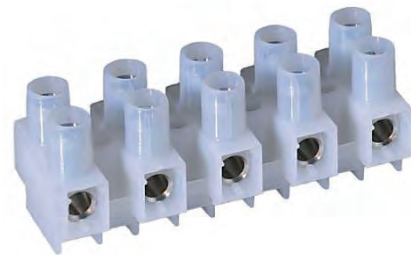
HE16



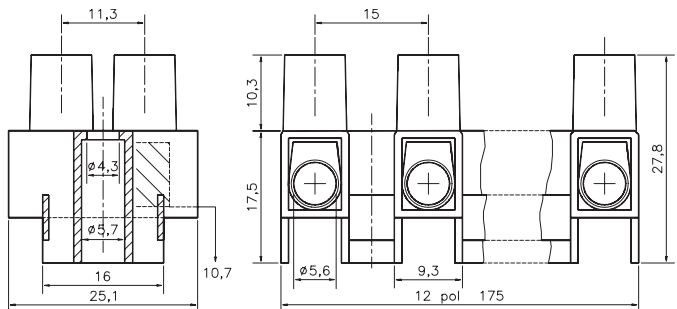
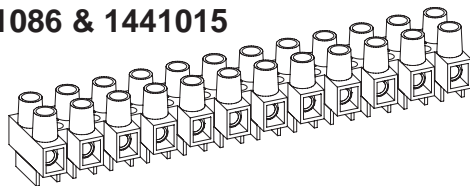
| Description       | Poles | Insert | Article No. |
|-------------------|-------|--------|-------------|
| HE16 12-poles     | 12    | Std.   | 0161N1210   |
| HE16 WPR 12-poles | 12    | WPR    | 0161W1210   |
| HE16 BA 12-poles  | 12    | BA     | 0161B1210   |
| HE16 2-poles      | 2     | Std.   | 0161N0210   |



Torque:  
Recommended 1,4 Nm  
Max. 2,0 Nm



HE16H  
1441086 & 1441015



| Description        | Poles | Insert | Article No. |
|--------------------|-------|--------|-------------|
| HE16H 12-poles     | 12    | Std.   | 0163N1210   |
| HE16H WPR 12-poles | 12    | WPR    | 0163W1210   |
| HE16H BA 12-poles  | 12    | BA     | 0163B1210   |
| HE16H WPR 4-poles  | 4     | WPR    | 0163W0410   |
| HE16H MS 12-poles  | 12    | Std.   | 0163N1210MS |

TECHNICAL DATA

TEKNIKA DATA

TECHNISCHE ANGABEN

Approvals

Godkännanden

Genehmigungen

|                    |                |                               |
|--------------------|----------------|-------------------------------|
| Voltage            | Fixing centres | Cable size                    |
| Märkspänning       | Delningsmått   | Area                          |
| Nennspannung       | Rastermass     | Nennquerschnitt               |
| <b>400 - 500 V</b> | <b>15 mm</b>   | <b>10 - 16 mm<sup>2</sup></b> |

|                                  |                       |                     |
|----------------------------------|-----------------------|---------------------|
| <b>UL HE16 300V / HE16H 600V</b> |                       |                     |
| Current                          | Working temperature   | Insulation material |
| Märkström                        | Arbetstemperatur      | Isolationsmaterial  |
| Nennstrom                        | Dauertemperatur       | Isoliermaterial     |
| <b>35/ UL 63 A</b>               | <b>80° C / 100° C</b> | <b>PA 66/6 V0</b>   |

|                     |                            |
|---------------------|----------------------------|
| Insert              | Screw M5                   |
| <b>Tinned Brass</b> | <b>Steel bluechromated</b> |
| Hylsa               | Skruv M5                   |

|                         |                              |
|-------------------------|------------------------------|
| Mässing förtent         | Stål blåkromatiserad         |
| Klemmkörper             | Schraube M5                  |
| <b>Messing verzinkt</b> | <b>Stahl blauchromatiert</b> |
| <b>AWG</b>              |                              |
| 18-6                    |                              |

|       |
|-------|
| HE16  |
| NEMKO |
| DEMKO |

|       |
|-------|
| HE16H |
| NEMKO |
| FI    |

|        |
|--------|
| VDE    |
| SEMKO  |
| UL     |
| Canada |

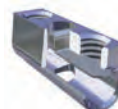
Standard  
Insert  
Inlägg  
Klemmkörper



Type BA  
Insert Barrier  
Inlägg Barriär  
Klemmkörper Barriere



Type WPR  
Insert Wire protector  
Inlägg Trädskydd  
Klemmkörper Drahtschutz



HFM  
Hot Foil Marking  
Märkning  
Bezeichnung



The terminal block can be supplied with wire protector **WPR** or with barrier inserts **BA**, hot foil marking **HFM** or Brass Screws **MS**. Dessa plintar kan levereras med trädskydd **WPR** eller med barriär inlägg **BA**, samt Mässingskrav **MS** och märkning **HFM** direkt på plinten. Die Klemmen können auf Wunsch mit Drahtschutz **WPR**, Klemmkörper mit Barriere **BA**, oder mit Messingschrauben **MS** und Bezeichnung **HFM** geliefert werden.